



File Creat Date:17/04/02 09:19:07

# GSP-6 Data Report

## Device Information

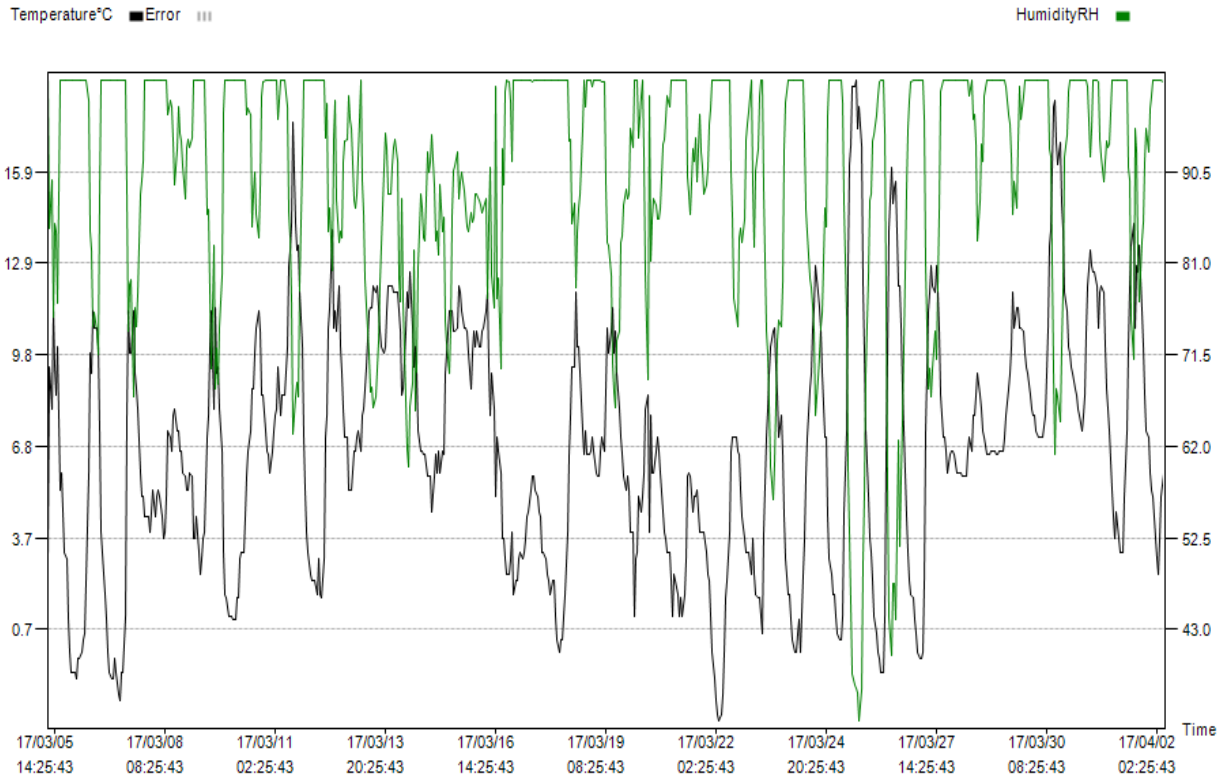
Log Interval: 1H 0M 0S	Start Delay: 0.0	Start Time: 17/03/05 10:25:43
Total Space: 16000	Stop Allow: Enable	Expected Stop Time: 19/01/01 01:25:43
Temperature Type:°C	Alarm Setting: Disable	Actual Stop Time: 17/04/02 07:25:43
Voice Set:Disable	Record Mode: Max	GSP: Disable

## Trip Information

Serial Number: 004  
 Userinfo: GSP-6 temperature & humidity Data Logger

## Logging Summary

Upper Limit: 60.0°C	Upper Limit: 90.0%RH	Recorded Count: 670
Lower Limit: -30.0°C	Lower Limit: 10.0%RH	First time: 17/03/05 10:25:43
Highest: 19.0°C	Highest: 100.0%RH	Last time: 17/04/02 07:25:43
Lowest: -2.4°C	Lowest: 33.5%RH	
Average: 6.7°C	Average: 90.1%RH	





Time	°C	RH	Time	°C	RH	Time	°C	RH	Time	°C	RH	Time	°C	RH
10:25:43	13.5	92.9												
11:25:43	14	92												
12:25:43	18.1	69.5												
13:25:43	18.3	61.2												
14:25:43	16.9	68												
15:25:43	16.2	67.2												
16:25:43	16.9	64.6												
17:25:43	14.9	72.4												
18:25:43	14	78.3												
19:25:43	11.9	92												
20:25:43	11.3	94.4												
21:25:43	10.1	98.8												
22:25:43	9.9	100												
23:25:43	9.4	100												
17/03/31	9.2	100												
01:25:43	8.7	100												
02:25:43	8.5	100												
03:25:43	8	100												
04:25:43	7.8	100												
05:25:43	7.3	100												
06:25:43	7.8	100												
07:25:43	8.5	100												
08:25:43	10.6	100												
09:25:43	12.1	99.4												
10:25:43	13.3	92												
11:25:43	12.8	95												
12:25:43	12.6	100												
13:25:43	12.6	100												
14:25:43	12.1	100												
15:25:43	10.7	99.9												
16:25:43	11.9	93.9												
17:25:43	12.1	92												
18:25:43	11.9	89.5												
19:25:43	10.1	91.6												
20:25:43	8.7	93.6												
21:25:43	8	93.1												
22:25:43	7.3	93.4												
23:25:43	5.3	100												
17/04/01	4.4	100												
01:25:43	3.7	100												
02:25:43	4.6	100												
03:25:43	3.7	100												
04:25:43	3.2	100												
05:25:43	3.2	100												
06:25:43	3.2	100												
07:25:43	5.1	100												
08:25:43	7.3	100												
09:25:43	10.1	91												
10:25:43	12.1	89.6												
11:25:43	13.5	75												
12:25:43	14.2	71.1												
13:25:43	10.7	94.9												
14:25:43	12.8	92.6												
15:25:43	12.6	81.7												
16:25:43	13.5	77												
17:25:43	11.3	83.3												
18:25:43	10.1	85.3												
19:25:43	8.5	91.5												
20:25:43	7.3	95												
21:25:43	7.1	92.5												
22:25:43	5.9	97												
23:25:43	5.3	98.3												
17/04/02	5.1	100												
01:25:43	3.7	100												
02:25:43	3	100												
03:25:43	2.5	100												
04:25:43	3.7	100												
05:25:43	5.1	100												
06:25:43	5.9	99.8												
07:25:43	10.1	80.7												